

The Ashtons logo is displayed in the top right corner. It features the word "Ashtons" in a white, sans-serif font, with a green swoosh underline beneath the letter 'A'. The logo is set against a dark purple rectangular background.

70 Bootham Crescent YO30 7AH

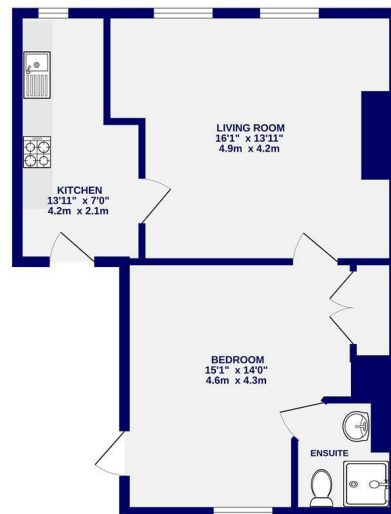
£895 Per Month



A spacious one bedroom first floor apartment located on Bootham Crescent, just a short walk from York city centre, train station and within easy access to the outer ring road and A19 North. The property is offered on an unfurnished basis and briefly comprises of kitchen with fridge freezer, oven, hob & washing machine; airy living room; large double bedroom with en-suite shower room off the bedroom.

Available 6th March / 6+ Month Tenancy / Deposit £995 / Council Tax Band A / EPC Rating C / On street Permit parking

FIRST FLOOR
488 sq.ft. (45.4 sq.m.) approx.



TOTAL FLOOR AREA: 488 sq.ft. (45.4 sq.m.) approx.
Whilst every attempt has been made to ensure the accuracy of the floorplan, measurements of rooms and any other areas are approximate. It is advised to the plan the dimensions and verify the accuracy of the measurements. These are not intended to be used as a guide for any other purpose. The plan is for illustrative purposes only and should be used as such by any prospective purchaser. The walls, systems and appliances shown have not been tested and are guaranteed as to their operation. Made with Metron (2025).



Ashtons Lettings



01904 731404



lettings@ashtonsnet.com

